

The logo for the National Alliance of Forest Owners (NAFO) is displayed in large, white, sans-serif capital letters. The letter 'A' is stylized with a vertical line extending downwards from its center. A registered trademark symbol (®) is positioned to the upper right of the letter 'O'. The logo is overlaid on a photograph of a dense forest of tall evergreen trees in the foreground, with rolling green hills and blue mountains in the background under a cloudy sky.

NAFO[®]

National Alliance of Forest Owners

MAINE FOREST PRODUCTS COUNCIL

DAVE TENNY, PRESIDENT & CEO





CLIMATE CHANGE



Can you
Prove it?



Private working forests represent

47%

of our total U.S. forest land base.

Each year they provide

90%

of our timber harvest for wood and fiber.

They also provide

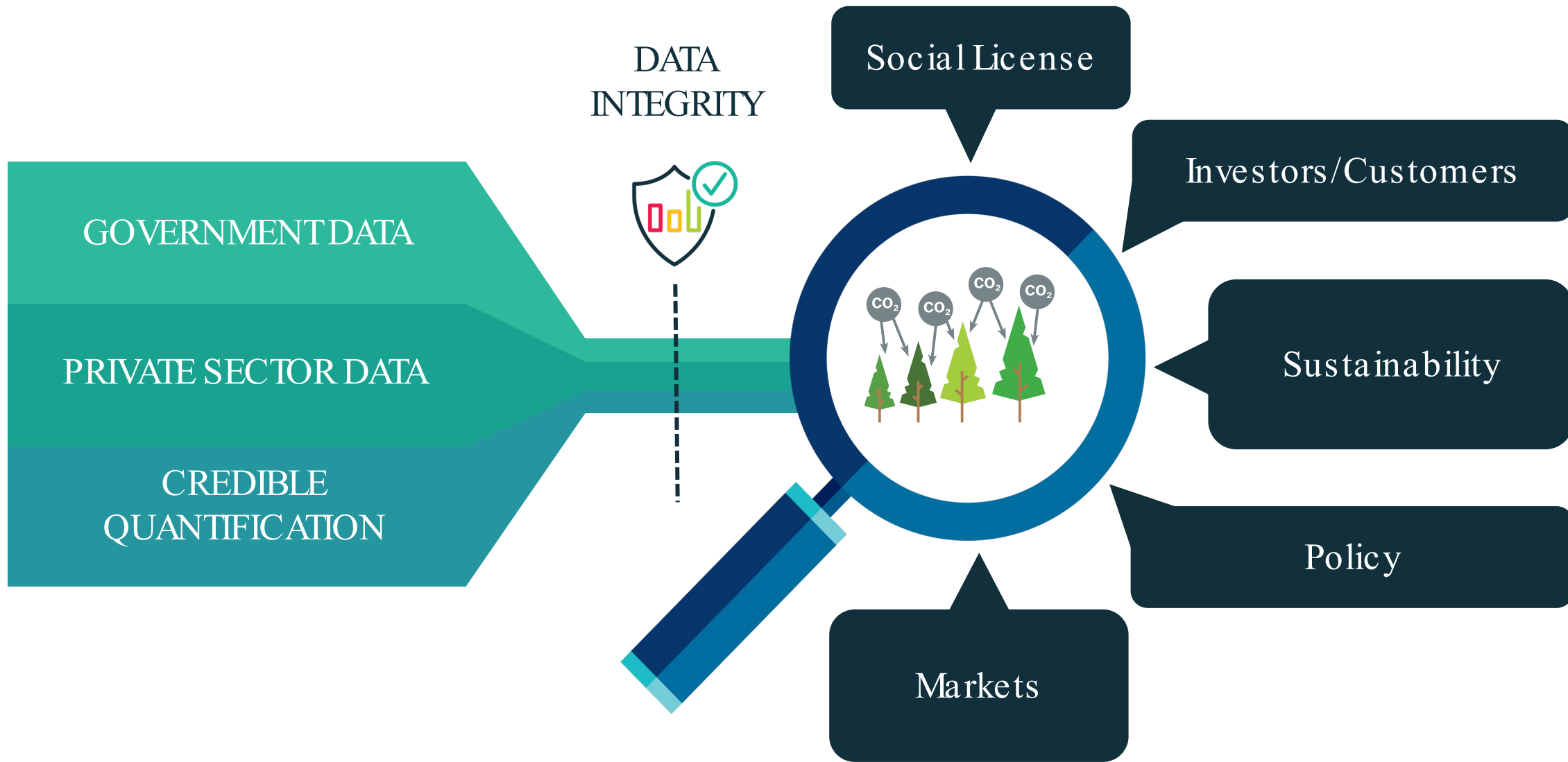
80%

of our net forest carbon sequestration.

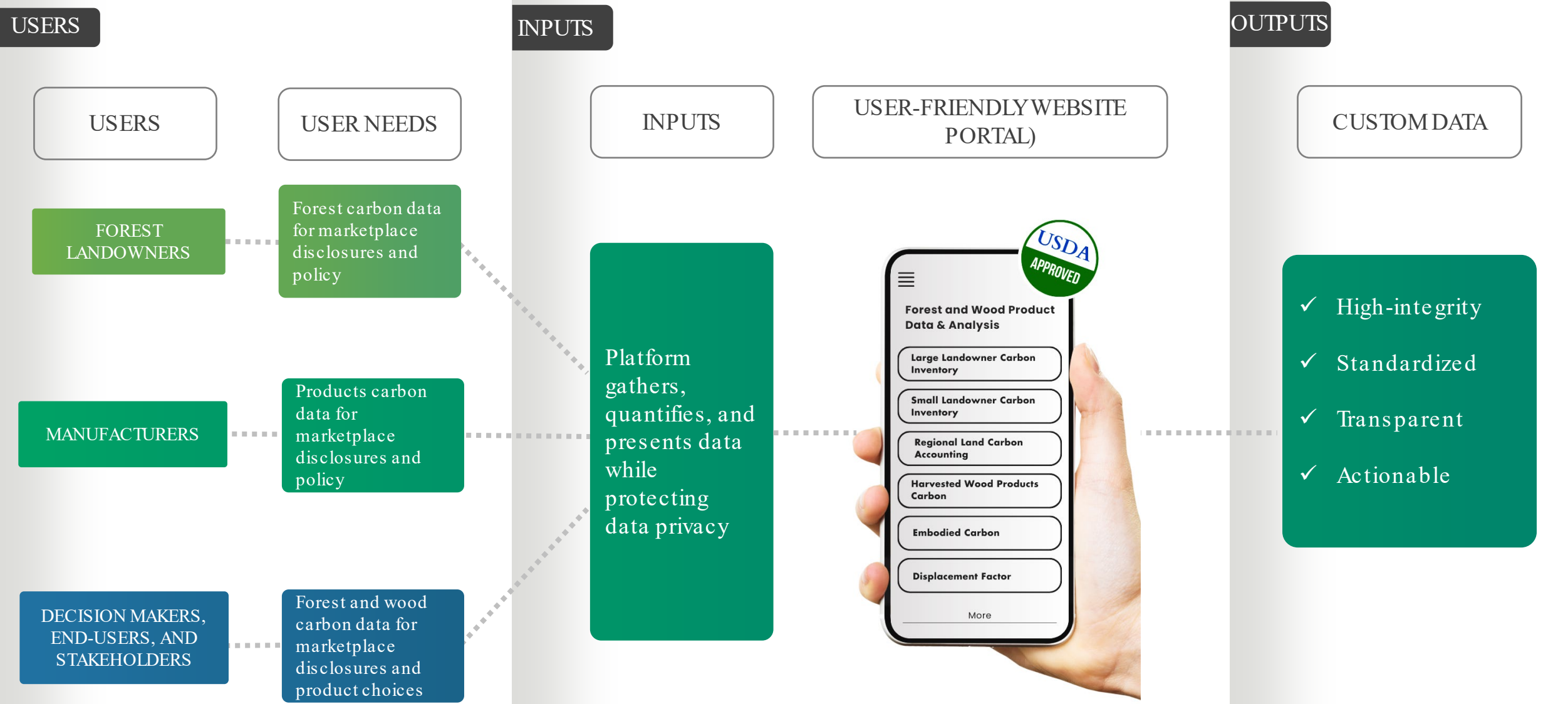
And they provide

47%

of our total forest carbon storage.



FOREST AND WOOD CARBON DATA PLATFORM



NATURE LOSS



Show me,
DON'T TELL ME.



NAFO MEMBER CONTRIBUTIONS



Member
company shape
files for surveys
and research

ACCESS



Sustainable
management
through
certification

CERTAINTY

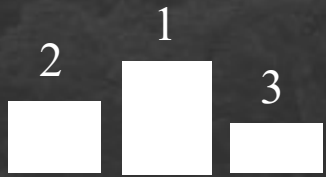


A commitment
to collaboration
and enduring
trust

TRUST

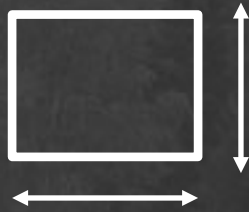
APPROACH

PRIORITY



Is it a priority for forest owners and federal/state agencies?

SCALE



Is it scalable? (helping one helps many)

PARTNERS



Can we engage a broader community?

STORIES



Can we tell an inspiring story?

OUTCOMES

- Habitat benefits 350+ other species
- Private landowner contributions
 - Access and data
 - Certainty through BMPs and certification
- USFWS contributions
 - Decision not to list
 - Legal certainty
- Broad stakeholder engagement
- A powerful story
- A change in culture



NEW TOOLS

- Working Forests For Wildlife
 - Simplicity
 - Unprecedented access to data
 - Certainty through certification
 - Take protection
 - Solutions for recovery
- Application to other species

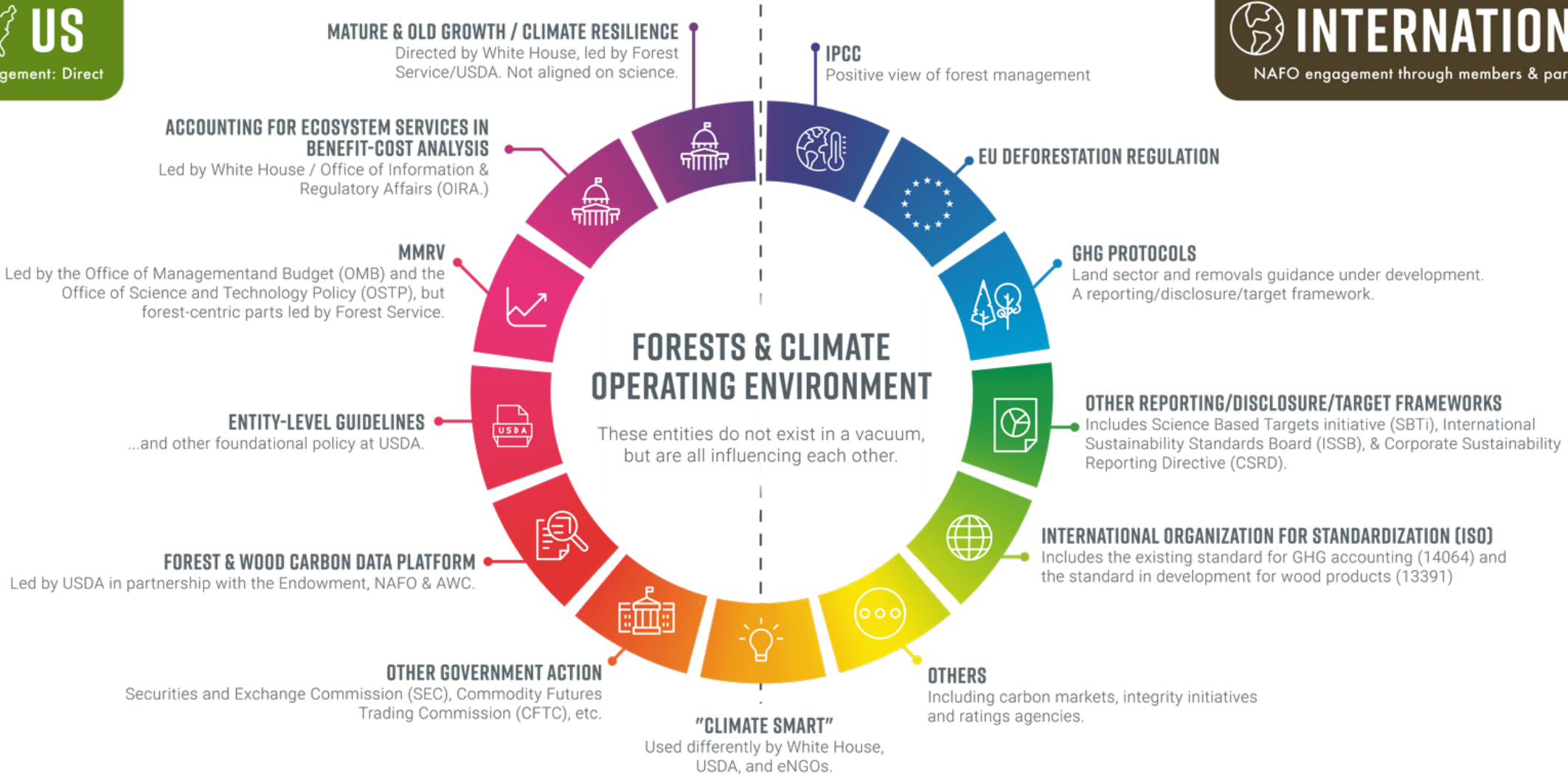




NAFO ENGAGEMENT IN THE US AND ABROAD

 **US**
NAFO engagement: Direct

 **INTERNATIONAL**
NAFO engagement through members & partners





NAFO'S GLOBAL FORESTRY TASK GROUP

Priority Issue Areas:

- Mitigating climate change and promoting resilience and adaptation
- Halting and reversing nature loss
- Supporting social and economic well-being of people and communities



Change
Just Ahead